

DIAMETER: 49244.32 km (30,599 mi)

DENSITY: 1.64 g/cm<sup>3</sup>

MOONS: 14

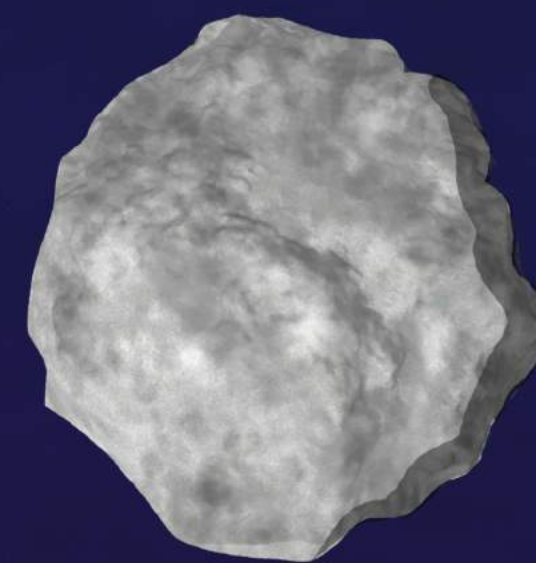
MASS: 1.024 x 10<sup>26</sup> kg (17x bigger than Earth's mass)

DISTANCE FROM EARTH: 4.3 billion km (2.7 billion mi)

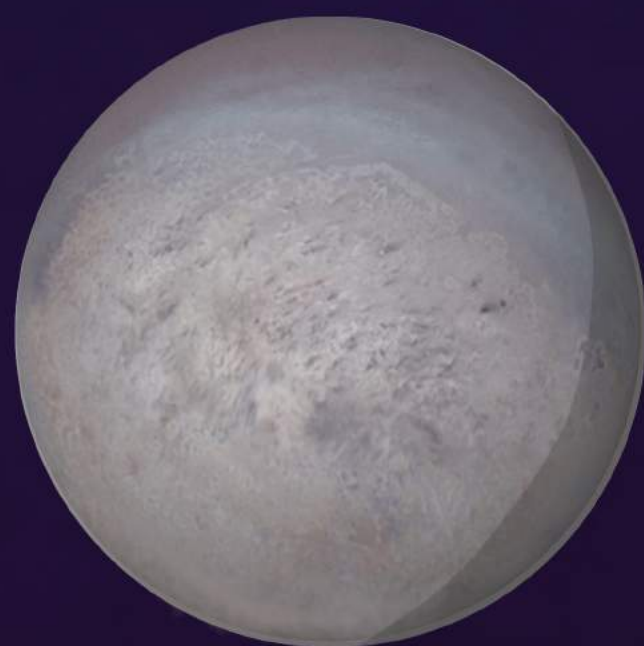
PLANETARY SYMBOL:



**PROTEUS**



**TRITON**



# NEPTUNE

NEPTUNE IS THE 8TH AND FURTHEST PLANET FROM THE SUN. IT IS ALSO A GAS PLANET COVERED IN ICE, MEANING THAT IT WOULD NOT BE POSSIBLE TO SUSTAIN LIFE ON IT. AND ALTHOUGH IT DOESN'T HAVE AS MANY MOONS AS JUPITER, IT DOES HAVE TWO TYPES OF MOONS: REGULAR AND IRREGULAR.

A REGULAR MOON, LIKE TRITON, MEANS THAT IT WAS FORMED WHILE ORBITING AROUND THE PLANET.

AN IRREGULAR MOON, LIKE PROTEUS, MEANS THAT PROTEUS STARTED AS AN ASTEROID THAT WAS PULLED INTO NEPTUNE'S GRAVITATIONAL PULL.

